

# Project Management Center

## Efficient planning and control of your projects



*You must complete your projects successfully under heavy time and cost pressures. The OMNITRACKER Project Management Center supports you in all phases of the project and facilitates efficient planning and control to a large extent. You can easily combine the Project Management Center with other OMNITRACKER applications and thus use information across processes. For example, you can combine project management with IT service management and risk management. OMNITRACKER is a powerful platform that supports all your business processes.*

### Key Benefits

- Project structuring, planning, control and monitoring
- Cost savings: One platform for all business processes
- Increased transparency
- Optimum integration with the OMNITRACKER IT Service Management Center
- Multi-client capability

### Planning and management

- Resource and capacity views (Gantt charts)
- Reusable project structure plans
- Data exchange with MS Project

### Processing and monitoring

- Overview of project progress, status and cost effectiveness
- Flexible views for end users and management teams
- Reporting and KPI dashboards

### Budget and cost control

- Overview of time expenditure and travel expenses
- Definable accounting parameters
- Export functionalities for data exchange with ERP systems

### Interface and display

- One user interface for different areas of application
- Overview of your projects (internal and external)

### Challenges

CIOs face ever increasing challenges when faced with optimising the efficiency and maturity of their organisations. Quality requirements for products and services are continuously increasing, simultaneously with mounting time and cost pressures.

### Efficient project management

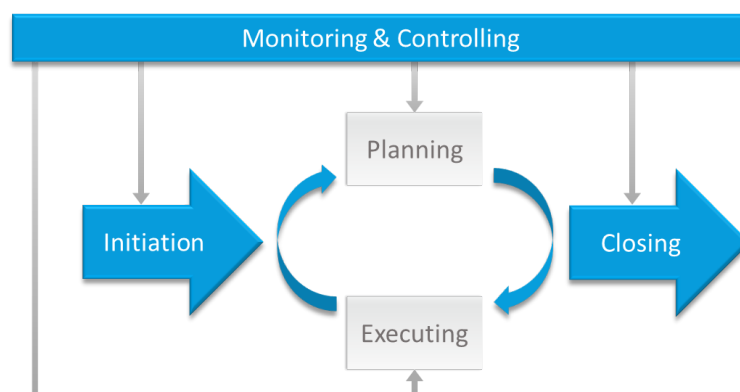
Concluding projects on time and within budget requires optimal resource planning, efficient implementation of the project phases and continuous budget monitoring.

### How can OMNITRACKER help you?

The OMNITRACKER Project Management Center supports the whole project lifecycle from its initiation through to closure. Reusable project structure plans make your project management even more efficient. Reports and dashboards give you an overview of resources and current project progress at any time.

You can use OMNITRACKER for all your business processes and thereby reduce your costs considerably. By integrating the OMNITRACKER IT Service Management Center, you use the same planning for resources, capacity and activities in both project management and IT service management.

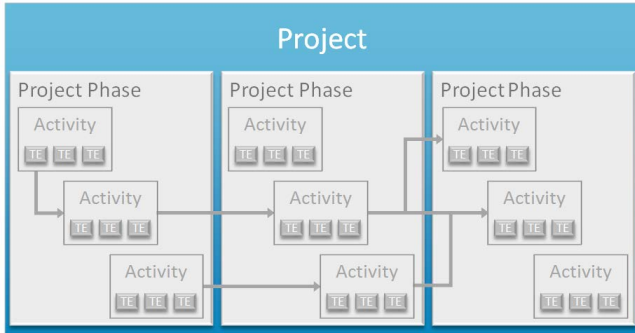
 **Hard to believe? Let us prove it!**





### Project Management Center

The OMNITRACKER Project Management Center supports all important project management processes for all types of projects.



Projects, project phases, activities and time entries

### Project structure

You can define the project structure on different levels.

#### Project

- Definition of scope (objective, categorisation, project description)
- Creation and approval of a project contract
- Management and storage of the necessary documents, e. g. a project charter or the project documentation

#### Project phase

Projects consist of at least one project phase.

- Creation of a project plan
- Budget planning and monitoring
- Operational project management

#### Activities

Project phases can comprise several activities (work packages), for which you can define dependencies. Time entries are recorded on activity level.

- Resource planning
- Definition of work packages and their budgets
- Monitoring of completion

### Templates for similar projects

Templates simplify the creation of new projects that have similar structures and procedures:

- **Project templates:** You can save every project as a template or create new templates from scratch. For new template-based projects, the Project Management Center adjusts all data automatically to the start date of the new project. All the project phases and relationships between activities are maintained.

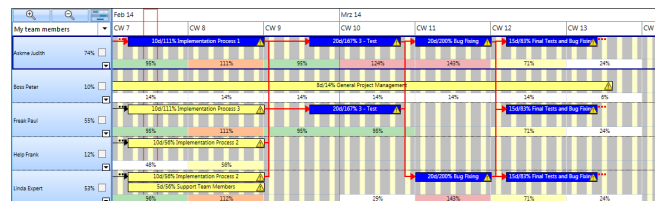
- **Project phase templates:** You can also define templates for individual project phases.
- **Activity templates:** In activity templates you can define the details for a set of activities and their interrelationships, e. g. predecessor/successor or superordinate/subordinate activities.

An easy-to-use wizard allows you to create even complex project structures in just a few minutes.

### Project planning

The OMNITRACKER Project Management Center supports initial project planning as well as continuous updating:

- Different planning modes: Top-down or bottom-up planning
- Definition of milestones
- Planning and definition of deliverables
- Scheduling and budgeting
- Resource planning: Graphic display of the average workload in percent.



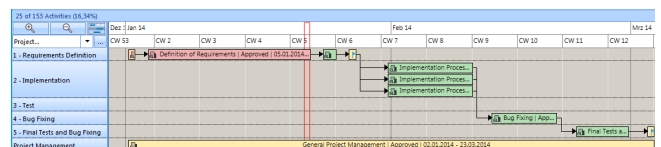
Overview of planned workload for all persons

### Simple planning adaptation

If you have to delay a project, project phase, milestone or certain activities, the OMNITRACKER Project Management Center ensures that your planning remains consistent.

- **Fixed delay of a project or project phase:** The project or project phase is rescheduled according to the new start date. All components are delayed accordingly, e. g. activities.
- **Dynamic delaying of activities or milestones:** Any buffers between activities are taken into account. If you do not want activities or milestones to be delayed dynamically, you can flag the deadlines as fixed on project or project phase level.

Integrated tests ensure that a project or project phase can be delayed only if planning still remains consistent.



Time line views give a quick overview of planning and current status.



### Project implementation and monitoring

The OMNITRACKER Project Management Center supports project implementation and monitoring during the entire project:

- Approval and closure of activities, project phases and projects
- Monitoring of milestones
- Calculation and monitoring of budget and costs
- Earned Value Analysis (EVA), to measure project status based on cost and time planning
- Monitoring thresholds relating to proportional budget utilisation: escalation where exceeded
- Colour-coded display of the cost effectiveness of individual activities and project phases
- Project documentation: In addition to the comprehensive data saved in your project, you can add any kind of file attachment to projects, project phases and activities.

Number	Project	Start (P)	End (P)	Start (C)	End (C)	Title	Unit	Effort (P)	Effort (C)	Budget Used %	Service	Inw.	State
PP-000097	FR-000031	01.01.2009	31.12.2048	01.01.2009	31.12.2010	Personal Administration	Days	1000	238	0	Working Time	Yes	Approved

Number	Start	End	Title	Effort (P)	Effort (C)	Percent Complete (PC)	Inw.	State	Responsible	Last Change
AT-000003	01.01.2009	31.12.2010	Create E-Mail Account	1	1	100%	Yes	Closed	Boss Peter	07.02.2014 09:54
AT-000004	01.01.2009	31.12.2010	Activate Time Recording	1	0,08	80%	Yes	Approved	Boss Peter	07.02.2014 09:56
AT-000005	01.01.2009	31.12.2010	Introduction	1	0,5	45%	Yes	Approved	Boss Peter	07.02.2014 09:58
AT-000006	01.01.2009	31.12.2010	Lock User Account	1	0	00%	Yes	Approved	Boss Peter	26.02.2013 13:47
AT-000007	01.01.2009	31.12.2010	Retract Company Equipment (Lapto...	1	0	00%	Yes	Approved	Boss Peter	26.02.2013 13:47

Colour coding visualises progress of project phases.

### Time recording

The OMNITRACKER Project Management Center has detailed time recording options:

- Record entries and travel costs for activities
- Record project-related costs.
- Define different calendars for working hours, e. g. country-specific.
- Time entries are entered in employee-specific time accounts.

### Reporting

Reports based on essential project metrics give you an overview of the project status. You can adapt these reports to the needs of your organisation very easily.

Examples:

- Status of individual activities and project phases in relation to planned time and cost budgets
- Expenditure for individual activities (e. g. based on recorded times)
- Status of selected projects

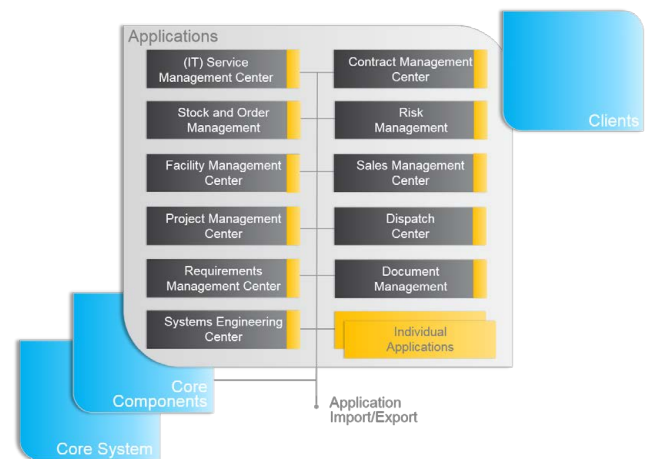
You can freely define the periods of time and the data to be analysed for the reports.

### Continuous integration

You can very easily integrate further OMNITRACKER applications on the OMNITRACKER platform, in order to fully support additional business processes, e. g.:







- IT service management as well as customer service solutions
- Systems engineering
- Contract management
- Requirements management
- Risk management

If you would like to integrate external systems, you can do so using the powerful OMNITRACKER interfaces.




## What is OMNITRACKER?

OMNITRACKER is a universal platform for business processes on which all OMNITRACKER applications are based. OMNITRACKER is a powerful tool for adapting processes to your needs:

-  **Save time** *OMNITRACKER offers solutions which you can implement quickly and adapt easily.*
-  **Cut costs** *After only a few days of training, you will be able to independently implement and configure OMNITRACKER applications.*
-  **Flexibility** *All OMNITRACKER applications are out-of-the-box solutions that are easily adapted to your needs – without programming.*
-  **Maintainability** *You can easily maintain your OMNITRACKER applications yourself.*
-  **Release compatibility** *Guaranteed release compatibility with future versions of the OMNITRACKER platform.*
-  **Customer-centred development** *Further development is geared towards customers' needs.*



 **OMNITRACKER makes your company fit for the future – even if your processes change over time.**

## OMNINET Software Solutions

As an owner-managed company, we answer solely to our customers. Our top objective is to offer our customers high-quality products and first-class service. To achieve this, we consistently fulfil the wishes and requirements of our customers regarding product content, quality and schedule. Our commitment to a customer does not end with the signing of the contract; but rather, that is when it begins.



Would you like to know more about OMNINET and OMNITRACKER solutions? Then please get in touch with us!



**OMNINET Technologies NV/SA**  
Belgium  
B-3000 Leuven  
Email: [sales@omninet.be](mailto:sales@omninet.be)  
Web: <http://www.omninet.be>

**OMNINET GmbH**  
Switzerland  
CH-8808 Pfäffikon  
Email: [sales@omninet.ch](mailto:sales@omninet.ch)  
Web: <http://www.omninet.ch>

**OMNINET GmbH**  
Germany  
D-90542 Eckental  
Email: [sales@omninet.de](mailto:sales@omninet.de)  
Web: <http://www.omninet.de>

**OMNINET OOO**  
Russia  
RUS-Moscow 107045  
Email: [sales@omninet.ru](mailto:sales@omninet.ru)  
Web: <http://www.omninet.ru>

**OMNINET Nederland**  
Netherlands  
NL-2517 JK Den Haag  
Email: [sales@omninet.nl](mailto:sales@omninet.nl)  
Web: <http://www.omninet.nl>

**OMNINET Austria GmbH**  
Austria  
A-1010 Wien  
Email: [sales@omninet.at](mailto:sales@omninet.at)  
Web: <http://www.omninet.at>

All hardware and software names used are trademarks or registered brands of the respective manufacturer.  
©OMNINET. Subject to change without notice. This document replaces all previous descriptions. PMC 3.3.0, 03/2014